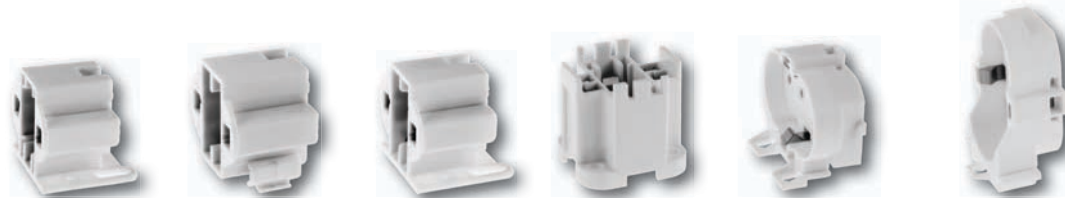


Other Wiring Products

Fluorescent Lampholders

Compact Fluorescent Lampholders



| Catalog Number | RL479HSM | RL413HSI | RL413HSM | RL426G24 | RL42G11HSM | RL42G11H9 |
|----------------|------------------------|---------------------|------------------------|------------------------|------------------------|-----------------------|
| Description | G23 base | GX23 base | GX23 base | G24Q-3, GX24Q-4 | 2G11 base, 4-pin | 2G11 base, 4-pin |
| Lamp Type | 5W, 7W, 9W | 13W | 13W | 26-32W | 18-55W | 18-55W |
| Rating | 75W, 600V | 75W, 600V | 75W, 600V | 75W, 600V | 75W, 600V | 75W, 600V |
| Mounting | Horizontal, screw-down | Horizontal, snap-in | Horizontal, screw-down | Horizontal, screw-down | Horizontal, screw-down | Vertical 90°, snap-in |

RL42G11C



Clip for 2G11 Base lampholders, Adjustable, Snap-in

High Output Fluorescent Lampholders



| Catalog Number | RL305* | RL306* | RL307 | RL308 | RL356 | RL357 |
|----------------|--------------------------------------|--------------------------------------|--------------------------------------|--------------------------------------|--|--|
| Description | Plunger | Fixed | Plunger | Fixed | Plunger | Fixed |
| Lamp Type | Horizontal - Recessed double contact | Horizontal - Recessed double contact | Horizontal - Recessed double contact | Horizontal - Recessed double contact | Vertical - Power groove & jacketed lamps | Vertical - Power groove & jacketed lamps |
| Rating | 660W, 600V | 660W, 600V | 660W, 600V | 660W, 600V | 660W, 600V | 660W, 600V |
| Mounting | Pedestal, slide-on | Pedestal, slide-on | Slide-on, snap-in | Slide-on, snap-in | Slide-on, snap-in | Slide-on, snap-in |

Note: * UL Listed only.

Medium Bi-Pin Fluorescent Lampholders - T8 & T12



Slimline Type Fluorescent Lampholder



| Catalog Number | RL320 | RL325 | RL325A | RL325B | RL310 | RL311 |
|----------------|---------------------------------------|---------------------------------------|----------------------|----------------------|--------------------|--------------------|
| Description | Disconnect 4-wire | Disconnect 4-wire | Disconnect 4-wire | Shunted 2-wire | Plunger | Fixed |
| Lamp Type | Bi-pin/tall profile | Bi-pin/low profile | Bi-pin/low profile | Bi-pin/low profile | Single pin | Single pin |
| Rating | 660W, 600V | 660W, 600V | 660W, 600V | 660W, 600V | 660W, 600V | 660W, 600V |
| Mounting | Slide-on and snap-in with captive nut | Slide-on and snap-in with captive nut | Slide-on and snap-in | Slide-on and snap-in | Pedestal, slide-on | Pedestal, slide-on |